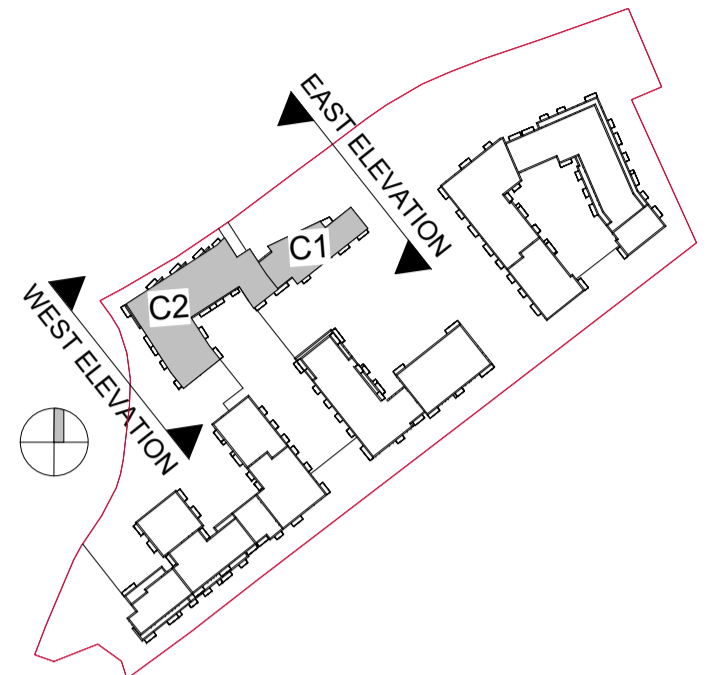


PLANNING DRAWING

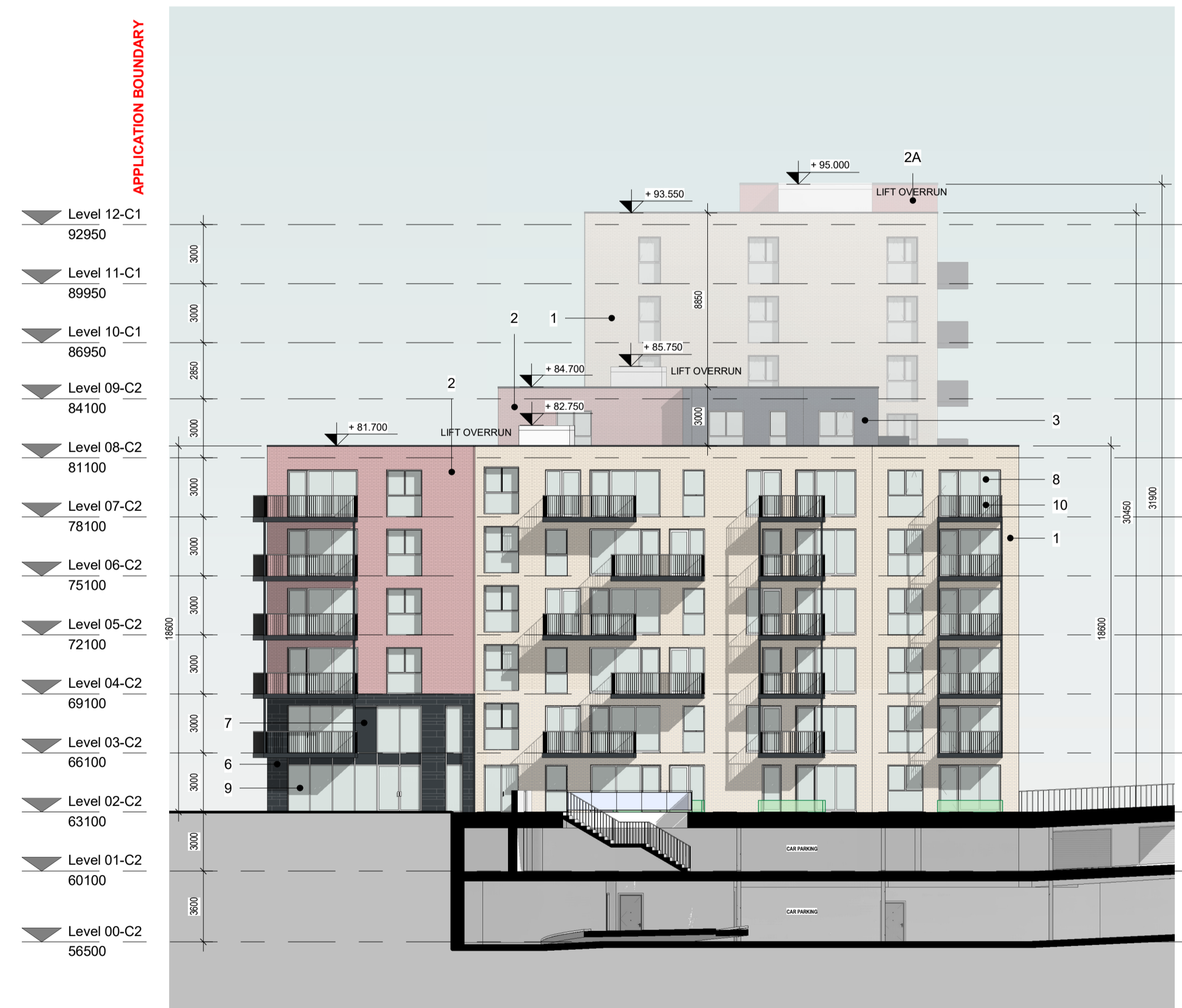


ELEVATION / SECTIONS MATERIAL KEY:

- 1- PROPOSED FINISH - SELECTED BEIGE BRICK FINISH. REFER TO DESIGN STATEMENT FOR MORE INFORMATION.
- 2- PROPOSED FINISH - SELECTED RED BRICK FINISH TYPE 2. REFER TO DESIGN STATEMENT FOR MORE INFORMATION.
- 2A- PROPOSED FINISH - SELECTED RED BRICK FINISH TYPE 2A. REFER TO DESIGN STATEMENT FOR MORE INFORMATION.
- 3- PROPOSED FINISH - SELECTED GREY BRICK FINISH. REFER TO DESIGN STATEMENT FOR MORE INFORMATION.
- 4- PROPOSED FINISH - SELECTED RENDER FINISH. REFER TO DESIGN STATEMENT FOR MORE INFORMATION.
- 5- PROPOSED FINISH - SELECTED CLADDING FINISH. REFER TO DESIGN STATEMENT FOR MORE INFORMATION.
- 6- PROPOSED FINISH - SELECTED GREY STONE FINISH. REFER TO DESIGN STATEMENT FOR MORE INFORMATION.
- 7- PROPOSED FINISH - PROPOSED SPANDREL PANEL. REFER TO DESIGN STATEMENT FOR MORE INFORMATION.
- 8- PROPOSED FINISH - POWER-COATED ALUMINIUM / PVC FRAME WINDOWS / DOORS.
- 9- PROPOSED GLAZED SHOP FRONTS
- 10- PROPOSED METAL BALCONY SYSTEM
- 11- PROPOSED FINISH - SELECTED PERFORATED METAL PANEL AND SLIDING PANELS
- 12- PROPOSED FINISH - VENTILATION LOUVERS: COLOUR TO MATCH WINDOW FRAMES
- 13- PROPOSED FINISH - INSET BRICK PANEL



1 BLOCK C - PROPOSED EAST ELEVATION
1 : 200



2 BLOCK C - PROPOSED WEST ELEVATION
1 : 200

Rev	Description	Date	Dr by	App by
P08	Full Application Drawings	14/03/22	VF	WP
P07	Draft Full Application Drawings	20/01/22	VF	WP
P06	Draft Full Application Drawings	16/12/21	VF	WP
P05	Pre-Application Submission	25/05/21	VF	WP
P04	Draft Pre-Application Drawings	06/05/21	VF	WP
P03	Draft Drawings for Information	18/03/21	VF	WP
P02	Issued for Information	01/03/21	VF	WP
P01	Ground & Typical Floor issued for Comment	03/02/21	VF	WP

Project Stage

PLANNING

Client:
Steeplefield Limited,

Project:
Greenhills Road, Walkinstown,
Dublin 12

Drawing Title:
BLOCK C - PROPOSED ELEVATION SHEET 2

Drawn	Checked	Paper Size	Scale	Date
VF	WP	A1	1 : 200@A1	02/16/21

Project No.	Drawing No.	Classification	Revision
PE18001	042202		P08

File Name
PE18001-CWO-BC-ZZ-DR-A-042202

Status:
S3 ISSUED FOR PLANNING



No.1 Sarsfield Quay, Dublin 7, D07 R9FH
t: 01 518 0170 e: admin@cwoarchitects.ie
Dublin | Cork | Galway | London | UK & Europe +
www.cwoarchitects.ie